



Challenges to continue producing sustainable lithium for the world

Ellen Lenny-Pessagno

Vice President Lithium Sustainability and Country Manager Chile,
July, 2020



Sustainable Business that Protects Our World-Class Natural Resources



SALAR DE ATACAMA, CHILE



GREENBUSHES, AUSTRALIA



SILVER PEAK, NV, USA



WODGINA, AUSTRALIA



ANTOFALLA, ARGENTINA



KINGS MOUNTAIN, NC, USA



MAGNOLIA, AR USA *

- ✓ Geographically Diverse
- ✓ High Quality
- ✓ Large Scale
- ✓ Low Cost

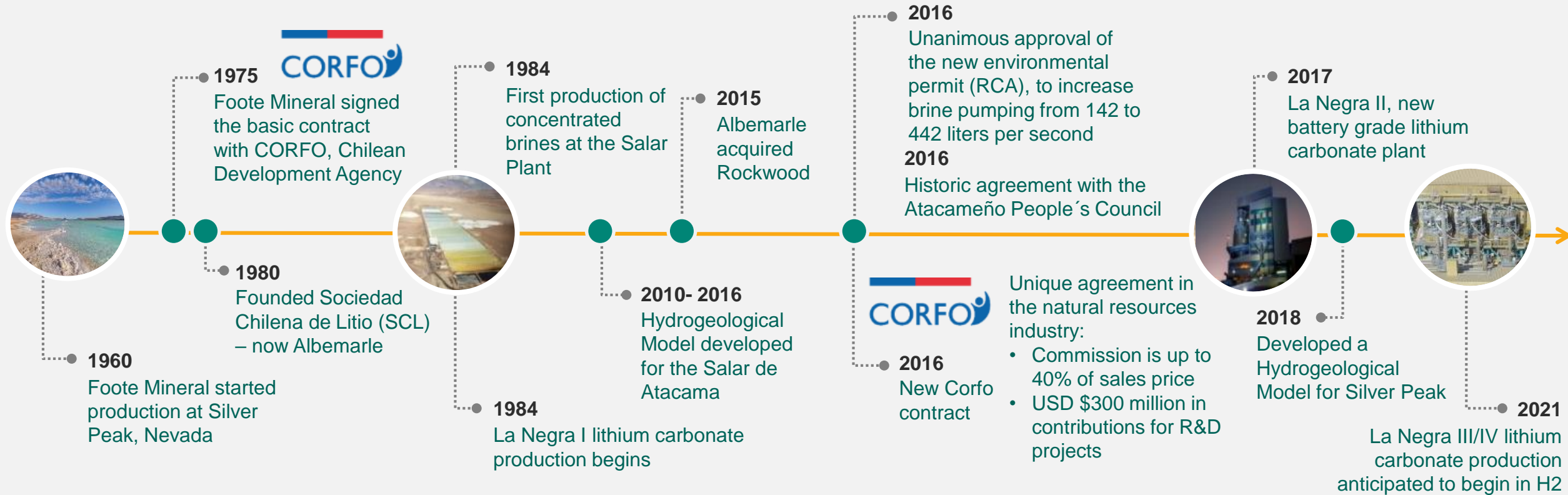


Integrated Global Footprint for Lithium Chemical Conversion



Production of 100+ Products Makes Albemarle one of the Most Capable & Diverse Lithium Companies

Pioneers of Lithium Production in Chile



Strategic Partnership with Chile Enabling Sustainable Development

Albemarle Chile

We are dedicated to the extraction and processing of brines and the production of **lithium carbonate and chloride**.

We are an **innovative company**, committed with the environment and part of one of the most important world producers:
Albemarle Corporation, based in North Carolina, United States.

We were the first to develop the lithium industry in Chile with Corfo. **We have more than 40 years of experience.**

We are a **sustainable business** that protects the country's natural resources and that **generates benefits for all stakeholders**: shareholders, customers, workers and communities.

We are **strategic allies of Chile in the development of the lithium industry**, contributing the experience and world leadership of our headquarters so the country can make the most of this potential.

Lithium drives customer potential in multiple markets

~650 Customers within Multiple End Markets in ~60 Countries¹



AUTOMOTIVE
EV / HEV / PHEV Batteries



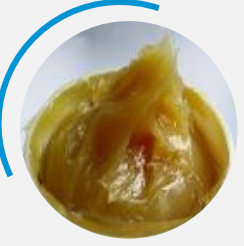
ENERGY EFFICIENCY
Power Grid
Solar Panels



ELECTRONICS
Phones / Pads
PCs
Power tools



SPECIALTY GLASS
Cooktop Stoves
Advanced Glass
Electronic Device Covers



GREASE
Machinery



HEALTH
Vitamins
Zeolites
X-ray Imaging



AUTOMOTIVE
Tires
Air Bags



PHARMA
HIV
Hypertension
Mood Disorder



AGRICULTURE
Fungicides
Herbicides

Energy Storage
CAGR through 2025 of ~30%

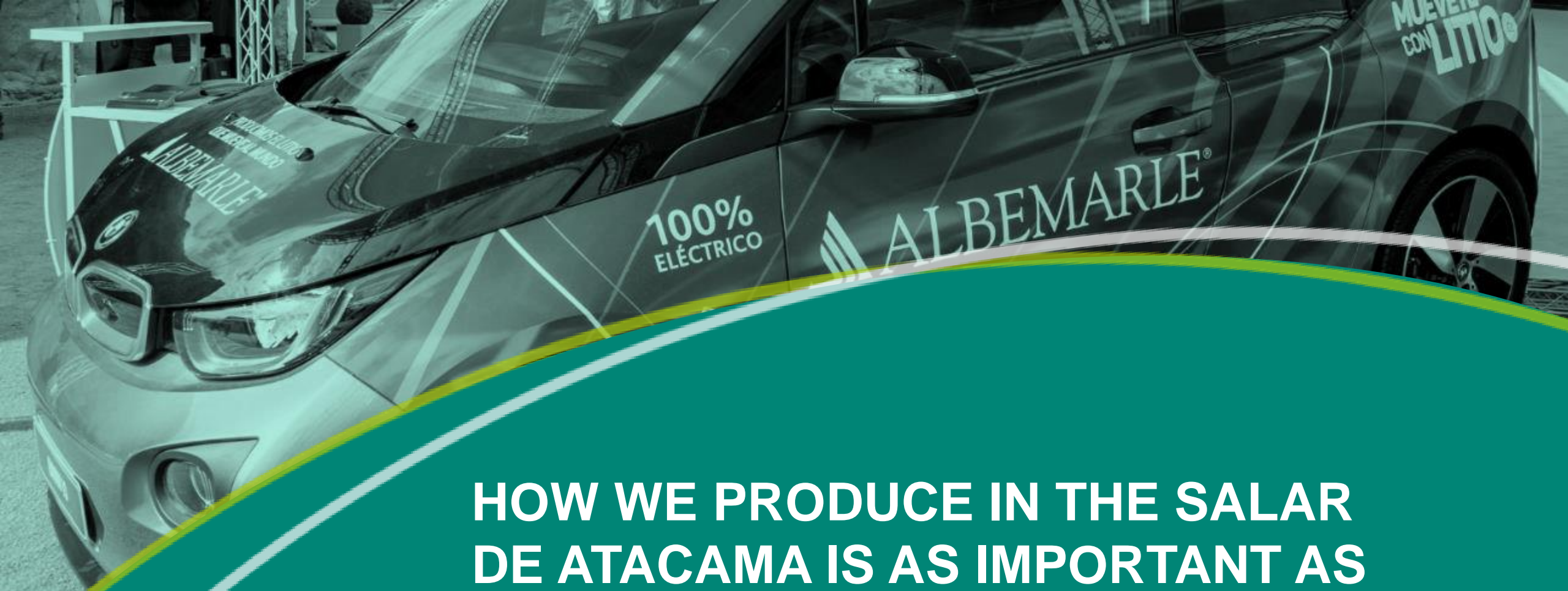
Battery Grade Hydroxide
Battery Grade Carbonate
Battery Grade Metal

Industrial
GDP Growth

Technical Grade Hydroxide
Technical Grade Carbonate
Technical Grade Spodumene
Specialty Lithium Salts

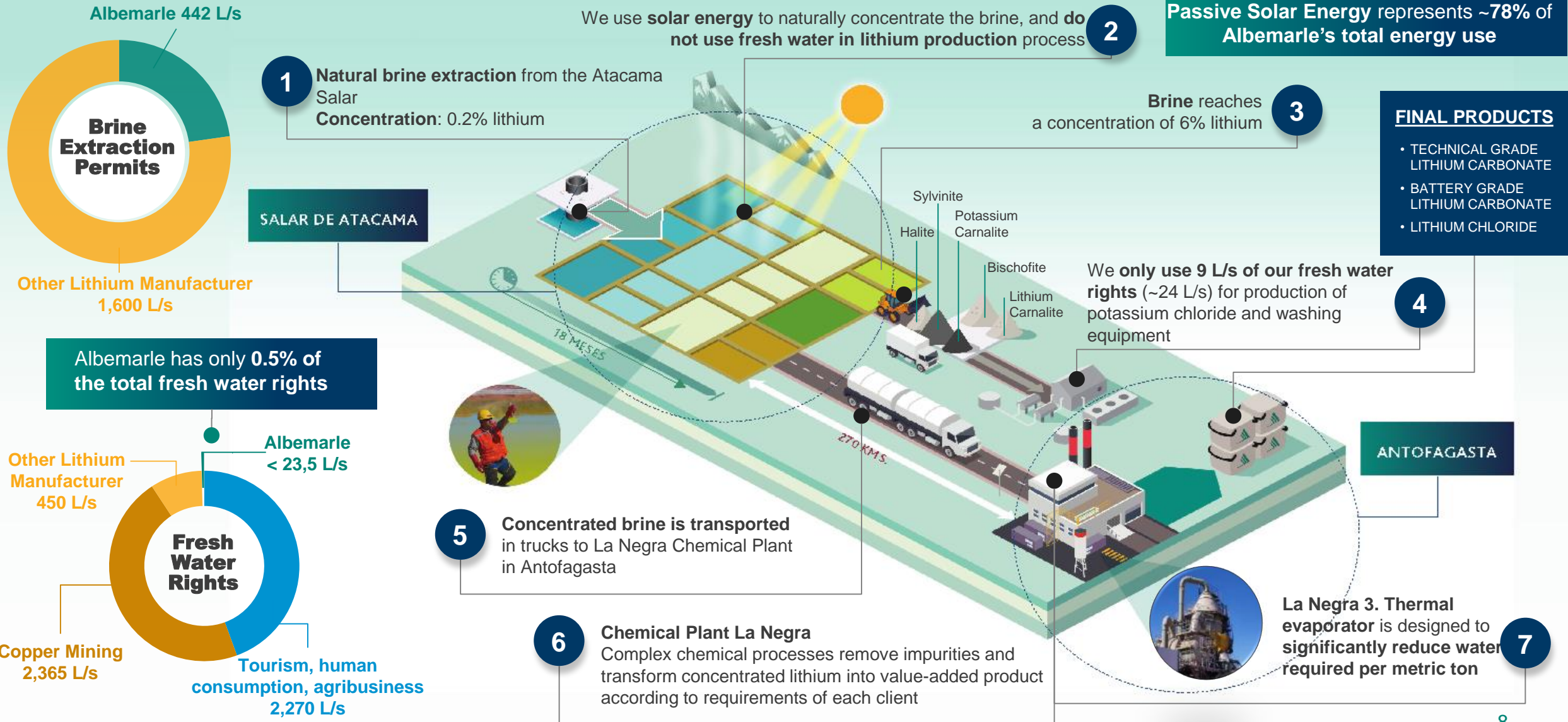
Specialties Grade
GDP+ Growth

Butyllithium
Cesium Products
Energetics Products
Organometallics
Lithium Carbonate Pharma Grade



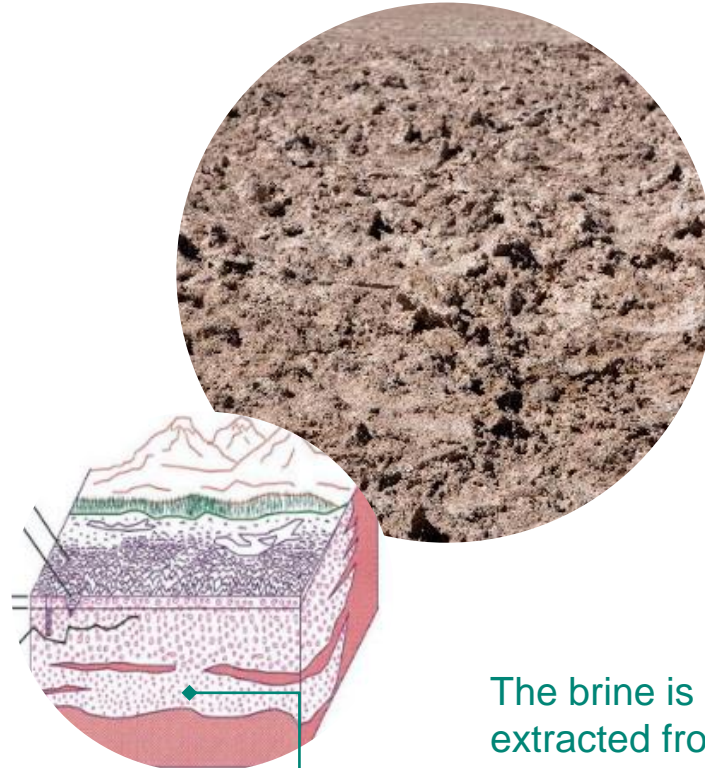
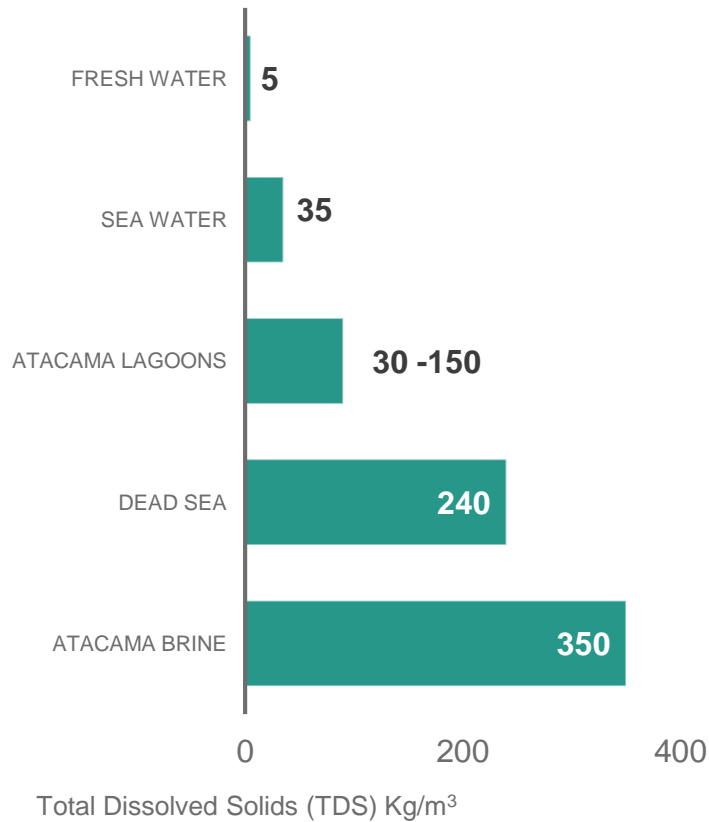
HOW WE PRODUCE IN THE SALAR DE ATACAMA IS AS IMPORTANT AS HOW MUCH WE PRODUCE

Production Process Does Not Use Fresh Water



How Brine is Different from Fresh Water

Salinity (TDS)¹



The brine is extracted from **beneath the salt flats**, where it has accumulated for **millions of years**

Sustainability in Salar de Atacama

- Each pumping well is monitored in real time and reported to environmental authorities
- Brine cannot be used for human consumption or agriculture
- We have 150 monitoring wells in the Salar basin; a representative from the indigenous communities accompanies Albemarle to monitor wells

For perspective²: the water evaporated from brine to produce a 64 kWh battery is equivalent to the water to produce:

- 250 grams or a half pound of beef
- 30 cups of coffee
- Half a pair of jeans

Fostering Communities and Promoting Environmental Stewardship

COMMUNITY RELATIONS



Joint Commitments for Sustainability

- Atacameño People's Council (CPA), represents 18 indigenous communities within the Salar basin
- Peine, closest indigenous community
- Municipality San Pedro de Atacama
- Municipality of Antofagasta

Leader in Community Engagement

- Jointly monitor the brine and water levels with indigenous communities
- Share a percentage of sales with indigenous communities



Voluntary Cooperation Agreement with Atacameño People's Council signed in 2016, More comprehensive than an indigenous consultation

Agreement based on standards from the:

- United Nations Declaration on the Rights of Indigenous Peoples
- ILO Convention 169 on Indigenous and Tribal Peoples in Independent Countries.

Mechanism for community to benefit from Company's operation

- 3.5% of Chilean sales contributed annually to indigenous communities to increase access to water, electricity, and support other infrastructure projects and scholarships



Dialogue process to foster communities' development

- Monthly Permanent Working Roundtable with representatives of the CPA and ALB to administer agreement and financial support

Promote environmental stewardship

- Cooperation in the promotion of the territory's sustainability and the protection of the Salar's ecosystems, particularly water resources
- Community hired professional staff supported by Albemarle funding, providing expertise in environmental, legal, and communications

More than 35% employees at the Salar Plant are indigenous

Sustainable lithium sourcing with Albemarle



Sustainability Report Highlights

- Net-zero carbon emissions by 2050
- Growing Lithium carbon-intensity neutral through 2030.
- Reducing freshwater by 25% by 2030 in areas of water risk
- Member of UN Global Compact
- Supporting 9 relevant UN Sustainable Development Goals

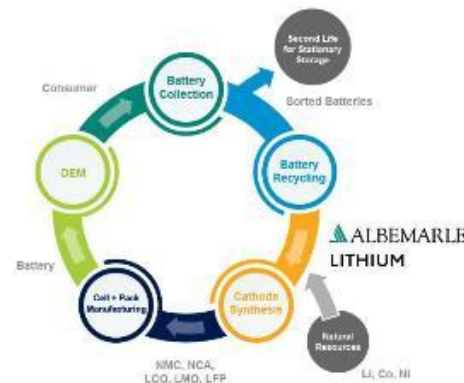


First lithium mine to complete a self-assessment
First mine in Chile to complete a self-assessment

On track to comply with IRMA Transparency by December 2022 and IRMA 50 by December 2025 for Chile and Australian Greenbushes mines

Lithium Recycling

- Will be an important resource in the future and will play a valuable role in meeting demand projections.
- We are partnering with strategic customers to make lithium recycling a reality.



Responsible Lithium Partnership

- Albemarle actively supports the project funded by Volkswagen, Daimler AG, BASF, Fairphone.
- This multi-sectoral platform is coordinated by GIZ and aims to facilitate understanding and shared visions for the future of the Salar de Atacama basin.





WHAT ARE THE PROJECTS AND CHALLENGES ASSOCIATED WITH CONTINUING TO PRODUCE SUSTAINABLE LITHIUM?

Growing with sustainability

- The lithium market is projected to gain significant momentum in the coming years, which could grow by up to 8 times worldwide by 2030 compared to 2020.
- The electromobility revolution is generating more demand for lithium, a vital element for the production of batteries for these vehicles.
- Europe, China and the United States are determined to boost their fleets of electric vehicles to tackle climate change.
- This global scenario challenges us to look for more efficient systems that allow us to increase lithium production with the same amount of authorized brine (442 L/s).



**At Albemarle we are committed
to sustainable growth**

We continue to grow in Chile

- Thanks to the commitment of all those who are working at the new La Negra 3 and 4 Plant, in the midst of the Covid-19 pandemic, we have continued to make progress.
- We have close to 100% progress in construction and this year we will start commissioning, that is, all the necessary adjustments so that we can start marketing production in 2022.
- This is excellent news for Albemarle but also for Chile as it will give us the capacity to double our production to more than 80 thousand tons of battery grade lithium.
- It is also a huge challenge because we decided to install a thermoevaporator that will allow us to significantly reduce the use of fresh water in the conversion process, which reaffirms our commitment to sustainability.



Capacity to double our production

Installation of Thermal Evaporator, La Negra

Reducing Fresh Water

- Scheduled for mid-2021, at La Negra, Chile, Lithium Carbonate Plant
- Estimated to reduce fresh water required to produce 1 MT LCE by more than 30% by recycling wastewater stream
- Installation of new thermal evaporator designed to significantly reduce water required per metric ton
- Cost \$100+ million



Doubling Production Capacity Without Doubling Water Footprint



EXPONOR 2022: AN OPPORTUNITY TO GENERATE COLLABORATION OPPORTUNITIES

Albemarle at Exponor 2019

- Exponor is the most important mining event in Chile.
- We are delighted to be present because it is held in the region of Antofagasta, where we are very proud to produce lithium at the Salar de Atacama and La Negra plants.
- It is an opportunity to show what we do and how we do it.
- In 2017 we brought the first electric vehicle to Antofagasta causing a lot of excitement among visitors. We inaugurated the plant during the show as well.
- More than 41 thousand people visited the fair, 1,000 exhibiting companies and there was an important business projection, estimated at US\$850 million.
- It is a great opportunity to bring together operations and projects, with workers and suppliers.
- We are very excited about participating in Exponor 2022.





Challenges to continue producing sustainable lithium for the world

Ellen Lenny-Pessagno

Vice President Lithium Sustainability and Country Manager Chile,
July, 2020

